

[Screenshots](#)[The Works](#)[Get Ghostzilla](#)[User manual](#)
[Very important!](#)
[FAQ](#)[Reviews](#)
[Guestbook](#)[License](#)
[About Ghostzilla](#)Related sites:
[Mozilla.org](#)

Download Free Ghostzilla-CD 1.0.1

Ghostzilla-CD is the most advanced version of the program; download it from one of the following mirrors (10MB archive; many thanks to people who offered to host it) and unpack it to a hard disk, USB drive, or a CD:

<http://www.sachsreport.com/GhostzillaCD-1.0.1-free-v1.zip> <http://planetmirror.com/pub/ghostzilla/download/GhostzillaCD-1.0.1-free-v1.zip> <http://code212.online.fr/downloads/GhostzillaCD-1.0.1-free-v1.zip>

NOTE: if you download Ghostzilla from a location other than the ones listed above, it is wise to verify that your Ghostzilla-CD .zip file is really the original file. The digital signature of the original .zip file, called the "**md5sum**", is

e3dd147627fdf9e287febe176406e36d

A great tool -- small and free -- that verifies this sum you can find at the [NullRiver site](#). Download and run that tool, and tell it to calculate the md5sum for the Ghostzilla .zip file you downloaded. What you'll see must be *exactly the same* as the sequence above.

Download Free Ghostzilla 1.0

Ghostzilla 1.0 installs on your PC like Mozilla or Firefox, and lacks the address bar, but otherwise is very similar to Ghostzilla CD.

[Download free Ghostzilla 1.0](#) from this mirror. The installation file size is **9.27MB**

Ghostzilla works on **Windows** only (98/Me/NT/2000/XP/

XPPro).

Download Ghostzilla Source

If you feel adventurous enough to build Ghostzilla yourself (and maybe even improve it), [download](#) its entire source code and build instructions.

For questions or comments, please [enter your message here](#).

©2002,2005 Ghostzilla.com. All rights reserved.

[Screenshots](#)

[The Works](#)

[Get Ghostzilla](#)

[User manual](#)
[Very important!](#)
[FAQ](#)

[Reviews](#)
[Guestbook](#)

[License](#)
[About Ghostzilla](#)

Related sites:
[Mozilla.org](#)

Select screenshots gallery

[Main example](#)
[Ghostzilla with Word](#)
[Ghostzilla with Internet Explorer](#)

[Animation \(small, 341 K GIF\)](#)
[Animation \(large, 814 K GIF\)](#)
[Extreme Ghostzilla example](#)

Click on any image to enlarge. You will understand best how Ghostzilla works by looking at the [animated](#) examples.

Main example



1.

Before:
 Outlook Express as the work application

2.

After:
 Ghostzilla activated

Activation sequence:
 touch the **left** edge of the screen with mouse cursor, then the **right** edge, then the **left** edge again.



Ghostzilla appears in a work application frame, showing the page you were at when you made Ghostzilla disappear the last time around.

Text and small pictures are gray on white; large pictures shown grayed when you move the mouse over their frame

3.



Alternatively: lower the "Hiding Level" to show large pictures in color when you move the mouse over them.

3b.



Six levels of hiding: from full colors of text and pictures to

all text and pictures gray on white

4.

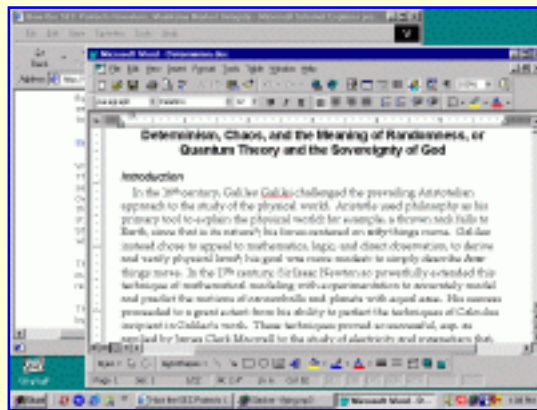


Browse **multiple pages** at once, by opening links in foreground and background *tabs*.

Move the mouse **away from the Web page** and it disappears, leaving the original work screen (1.)

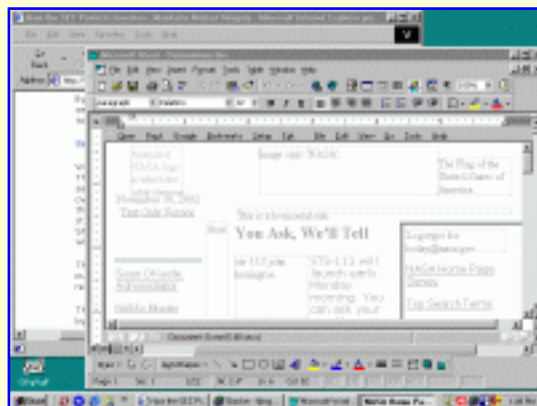
Ghostzilla with Word

1.



Before

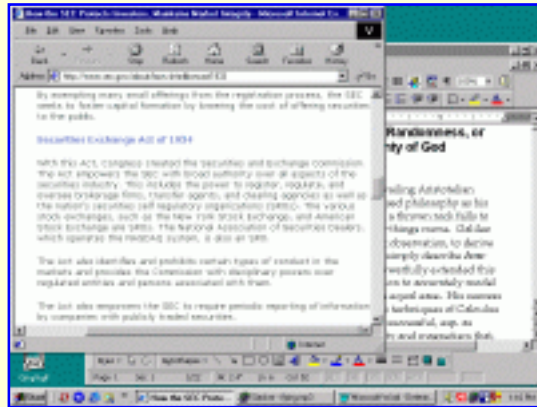
2.



After

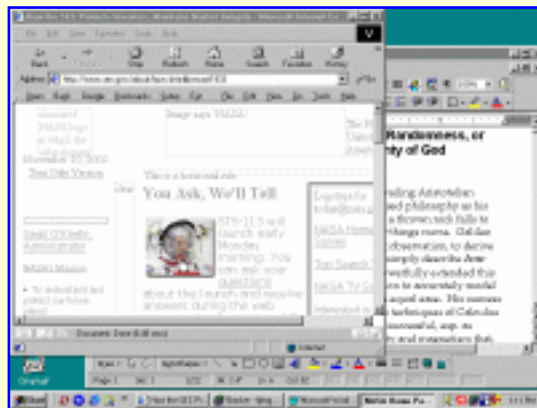
Ghostzilla with Internet Explorer

1.



Before

2.

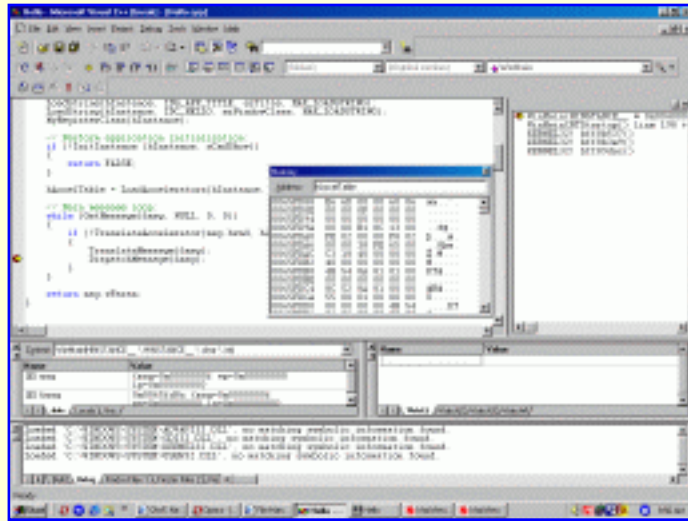


After

Extreme Ghostzilla example

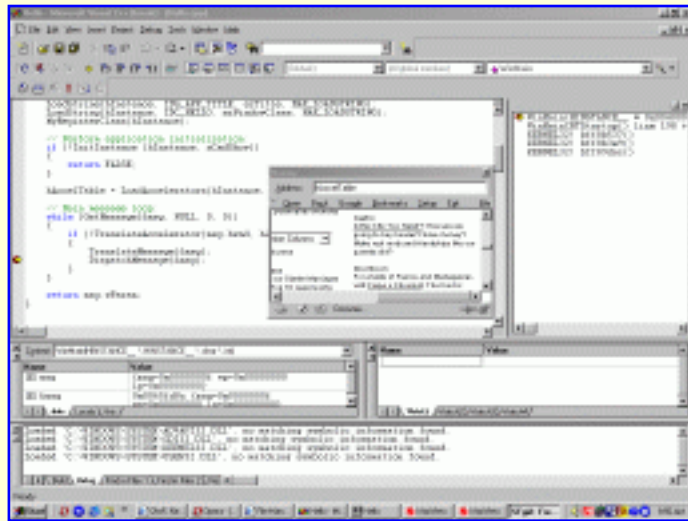
You can position Ghostzilla in a very **small** application window and **reduce** text size (zoom out):

1.



Before

2.



After

For questions or comments, please [enter your message here](#).

©2002,2003 Ghostzilla.com. All rights reserved.

Inbox - Outlook Express provided by Verizon Online

File Edit View Tools Message Help

New Mail Reply Reply All Forward Print Delete Send/Recv Addresses Find

Inbox

Folders: Outlook Express, Local Folders, **Inbox (6)**, Outbox, Sent Items, Deleted Items, Drafts

From	Subject	Received
Verizon Online	Important! E-mail Settings Change Required	26.9.02 12:17 PM
Verizon Online	Introducing the Verizon Online Support Center	19.9.02 8:48 AM
Compurun	Best-Selling Computer Hardware and Software at Disc...	16.7.02 4:48 PM

From: Verizon Online **To:** Valued Verizon Online Customer
Subject: Introducing the Verizon Online Support Center

Introducing the Verizon Online Support Center, intelligent software that helps you to diagnose and repair common problems with your Verizon Online Internet service. The Support Center is the fastest and easiest support solution to most technical problems you may experience with your Internet service.

We know that when you use your DSL connection for work, bill paying, or staying in touch with friends, you don't want to spend any more time than you have to dealing with an Internet service technical issue. So, find out how you can get back on track fast with Verizon Online Support Center.

Visit <http://www2.verizon.net/supportcenter/email/> to download the Support Center software, take an online tour or find out how the Verizon Online Support Center can help you . . .

*Resolve common Internet service issues automatically

19 message(s), 6 unread Working Online

Start | [Icons] | [Taskbar] | 7:35 AM

Inbox - Outlook Express provided by Verizon Online

File Edit View Tools Message Help

New Mail Reply Reply All Forward Print Delete Send/Recv Addresses Find

Inbox

Folders Outlook Express Local Folders **Inbox (6)** Outbox Sent Items Deleted Items Drafts

From	Subject	Received
Verizon Online	Important! E-mail Settings Change Required	26.9.02 12:17 PM
Verizon Online	Introducing the Verizon Online Support Center	19.9.02 8:48 AM
Compurun	Best-Selling Computer Hardware and Software at Disc...	16.7.02 4:48 PM

From: Verizon Online **To:** Valued Verizon Online Customer
Subject: Introducing the Verizon Online Support Center

Open Back Google Bookmarks Setup Exit File Edit View Go Tools Help

Africa's "Shining Mountain" may soon shine no more. The snow and ice on the summit of Mount Kilimanjaro is melting so fast that some scientists believe its ice cap could be gone by the year 2015. The ice cap formed more than 11,000 years ago. Researchers say the ice fields on Africa's highest mountain shrank by 80 percent over the past century.

About a foot and a half of the summit's glacial ice is lost each year due to rising surface temperatures. There is concern that the loss of Kilimanjaro's ice cap could impact both the local climate as well as the availability of fresh water for local populations who depend upon the glacial melt runoff, particularly during the dry seasons.

Where on Earth...? MISR Mystery Image Quiz #12

Severe Weather Hits U.S. West Coast

Severe Weather Hits U.S. West Coast

Document: Done (0.44 secs)

19 message(s), 6 unread Working Online

Start | [Icons] | Inbox - Outlook Express pr... | EO Newsroom: New Ima... | [Icons] | 7:35 AM

Microsoft Visual C++ [break] - [Hello.cpp]

File Edit View Insert Project Debug Tools Window Help

(Globals) (All global members) WinMain

```

LoadString(hInstance, IDS_APP_TITLE, szTitle, MAX_LOADSTRING);
LoadString(hInstance, IDC_HELLO, szWindowClass, MAX_LOADSTRING);
MyRegisterClass(hInstance);

// Perform application initialization:
if (!InitInstance (hInstance, nCmdShow))
{
    return FALSE;
}

hAccelTable = LoadAccelerators(hInstance,

// Main message loop:
while (GetMessage(&msg, NULL, 0, 0))
{
    if (!TranslateAccelerator(msg.hwnd, hAccelTable, &msg))
    {
        TranslateMessage(&msg);
        DispatchMessage(&msg);
    }
}

return msg.wParam;
}

```

Memory

Address: hAccelTable

Open Back Google Bookmarks Setup Exit File

personality overrides

Castro

Is this City Too Harsh?: How are we going to buy houses? Save money? Make real roots and friendships like our parents did?

Columns

Columns

Downtown

For a taste of France and Madagascar, visit Crepe o Chocolat. The food is

Docume...

WinMain(HINSTANCE_ * 0x004000 WinMainCRTStartup() line 198 + KERNEL32! bff8b537() KERNEL32! bff8b3e9() KERNEL32! bff89dac()

Context: WinMain(HINSTANCE_ *, HINSTANCE_ *, char *, int)

Name	Value
msg	{msg=0x0000000f wp=0x00000000 lp=0x00000000}
&msg	0x0065fd8c {msg=0x0000000f wp=0x00000000 lp=0x00000000}

Auto Locals this

Name	Value
Watch1	
Watch2	
Watch3	
Watch4	

Loaded 'C:\WINDOWS\SYSTEM\ADVAPI32.DLL', no matching symbolic information found.
 Loaded 'C:\WINDOWS\SYSTEM\GDI32.DLL', no matching symbolic information found.
 Loaded 'C:\WINDOWS\SYSTEM\KERNEL32.DLL', no matching symbolic information found.
 Loaded 'C:\WINDOWS\SYSTEM\USER32.DLL', no matching symbolic information found.

Build Debug Find in Files 1 Find in Files 2 Re

Ready

Start QWK.Ne... Opera - [...] File Man... Hello - Mi... Hello IrfanView IrfanView SFgirl: Fre... 9:55 AM

Hello - Microsoft Visual C++ [break] - [Hello.cpp]

File Edit View Insert Project Debug Tools Window Help

(Globals) (All global members) WinMain

```

LoadString(hInstance, IDS_APP_TITLE, szTitle, MAX_LOADSTRING);
LoadString(hInstance, IDC_HELLO, szWindowClass, MAX_LOADSTRING);
MyRegisterClass(hInstance);

// Perform application initialization:
if (!InitInstance (hInstance, nCmdShow))
{
    return FALSE;
}

hAccelTable = LoadAccelerators(hInstance,

// Main message loop:
while (GetMessage(&msg, NULL, 0, 0))
{
    if (!TranslateAccelerator(msg.hwnd, hAccelTable, &msg))
    {
        TranslateMessage(&msg);
        DispatchMessage(&msg);
    }
}

return msg.wParam;
}

```

Memory

Address: hAccelTable

0065FD88	E6 6D 00 00 60 06	æm...
0065FD8E	00 00 0F 00 00 00
0065FD94	00 00 00 00 00 00
0065FD9A	00 00 B1 8C 13 00	..±I..
0065FDA0	FE 02 00 00 F8 02	b...ø.
0065FDA6	00 00 38 FE 65 00	..8pe.
0065FDAC	C3 18 40 00 00 00	Ã.@...
0065FDB2	40 00 00 00 00 00	@.....
0065FDB8	4B 54 8A 81 01 00	KT ...
0065FDBE	00 00 00 00 00 00
0065FDC4	8C 52 8A 81 00 00	R ...
0065FDCA	55 00 01 00 00 00	U.....
0065FDD0	00 00 00 00 4B 54	...KT
0065FDD6	01 01 00 00 00 00

WinMain(HINSTANCE_ * 0x004000
WinMainCRTStartup() line 198 +
KERNEL32! bff8b537()
KERNEL32! bff8b3e9()
KERNEL32! bff89dac()

Context: WinMain(HINSTANCE_ *, HINSTANCE_ *, char *, int)

Name	Value
msg	{msg=0x0000000f wp=0x00000000 lp=0x00000000}
&msg	0x0065fd8c {msg=0x0000000f wp=0x00000000 lp=0x00000000}

Auto Locals this

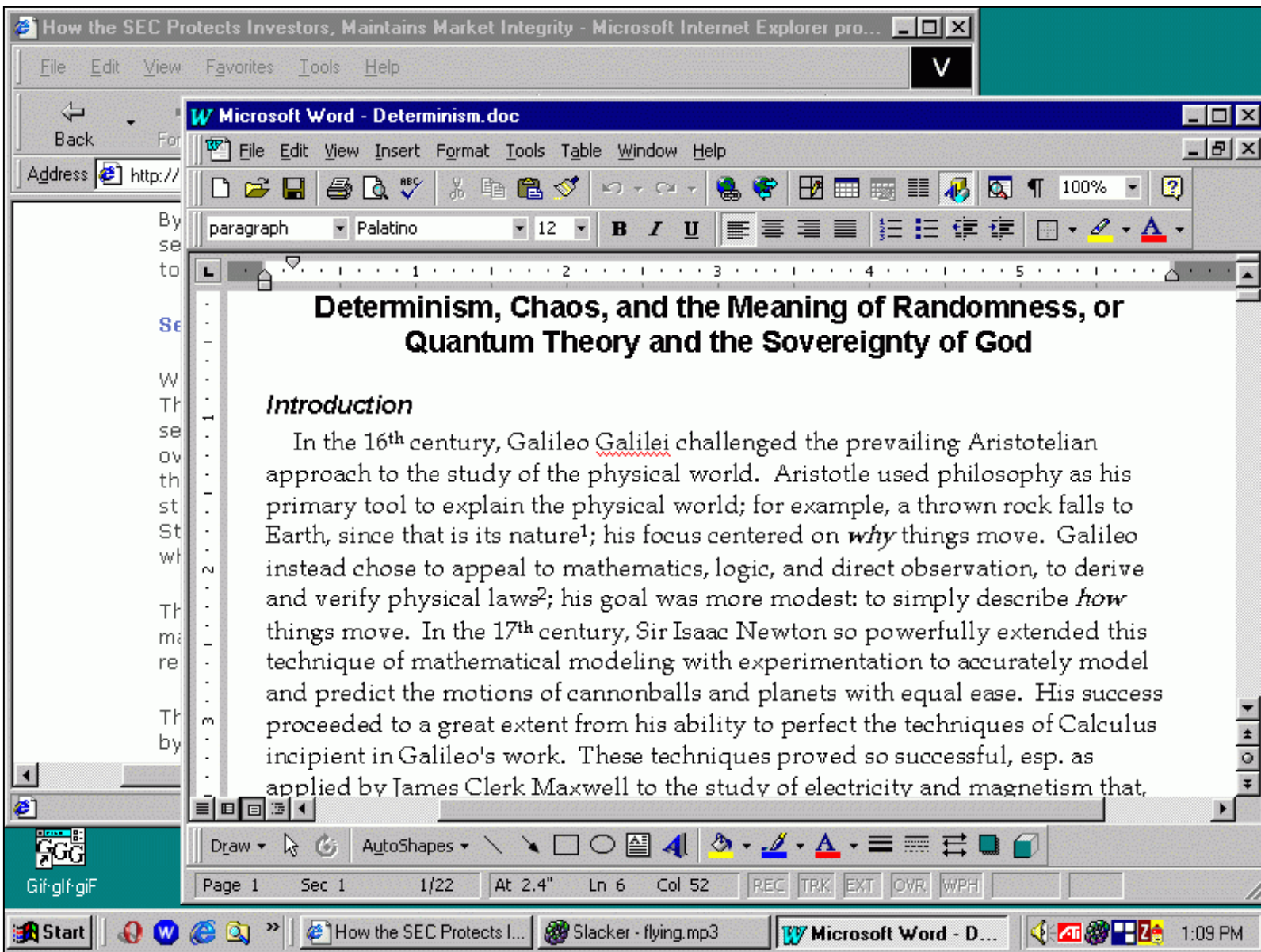
Watch1 Watch2 Watch3 Watch4

Loaded 'C:\WINDOWS\SYSTEM\ADVAPI32.DLL', no matching symbolic information found.
Loaded 'C:\WINDOWS\SYSTEM\GDI32.DLL', no matching symbolic information found.
Loaded 'C:\WINDOWS\SYSTEM\KERNEL32.DLL', no matching symbolic information found.
Loaded 'C:\WINDOWS\SYSTEM\USER32.DLL', no matching symbolic information found.

Build Debug Find in Files 1 Find in Files 2 Re

Ready

Start QWK.Ne... Opera - [...] File Man... Hello - ... Hello IrfanView... IrfanView 9:56 AM



Inbox - Outlook Express provided by Verizon Online

File Edit View Tools Message Help

New Mail Reply Reply All Forward Print Delete Send/Recv Addresses Find

Inbox

Folders Outlook Express Local Folders **Inbox (6)** Outbox Sent Items Deleted Items Drafts

From	Subject	Received
Verizon Online	Important! E-mail Settings Change Required	26.9.02 12:17 PM
Verizon Online	Introducing the Verizon Online Support Center	19.9.02 8:48 AM
Compurun	Best-Selling Computer Hardware and Software at Disc...	16.7.02 4:48 PM

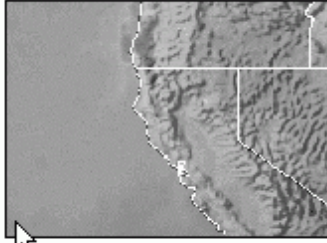
From: Verizon Online **To:** Valued Verizon Online Customer
Subject: Introducing the Verizon Online Support Center

Open Back Google Bookmarks Setup Exit File Edit View Go Tools Help

Africa's "Shining Mountain" may soon shine no more. The snow and ice on the summit of Mount Kilimanjaro is melting so fast that some scientists believe its ice cap could be gone by the year 2015. The ice cap formed more than 11,000 years ago. Researchers say the ice fields on Africa's highest mountain shrank by 80 percent over the past century.

About a foot and a half of the summit's glacial ice is lost each year due to rising surface temperatures. There is concern that the loss of Kilimanjaro's ice cap could impact both the local climate as well as the availability of fresh water for local populations who depend upon the glacial melt runoff, particularly during the dry seasons.

Where on Earth...? MISR Mystery Image Quiz #12



Severe Weather Hits U.S. West Coast

http://earthobservatory.nasa.gov/Ne.../NewImages/images.php?img_id=10854

19 message(s), 6 unread Working Online

Start | [Icons] | Inbox - Outlook Express pr... | EO Newsroom: New Ima... | [Icons] | 7:35 AM

Inbox - Outlook Express provided by Verizon Online

File Edit View Tools Message Help

New Mail Reply Reply All Forward Print Delete Send/Recv Addresses Find

Inbox

Folders Outlook Express Local Folders **Inbox (6)** Outbox Sent Items Deleted Items Drafts

From	Subject	Received
Verizon Online	Important! E-mail Settings Change Required	26.9.02 12:17 PM
Verizon Online	Introducing the Verizon Online Support Center	19.9.02 8:48 AM
Compurun	Best-Selling Computer Hardware and Software at Disc...	16.7.02 4:48 PM

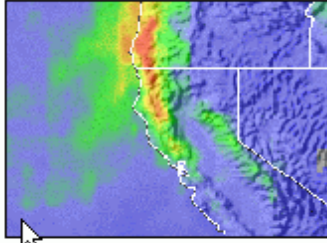
From: Verizon Online **To:** Valued Verizon Online Customer
Subject: Introducing the Verizon Online Support Center

Open Back Google Bookmarks Setup Exit File Edit View Go Tools Help

Africa's "Shining Mountain" may soon shine no more. The snow and ice on the summit of Mount Kilimanjaro is melting so fast that some scientists believe its ice cap could be gone by the year 2015. The ice cap formed more than 11,000 years ago. Researchers say the ice fields on Africa's highest mountain shrank by 80 percent over the past century.

About a foot and a half of the summit's glacial ice is lost each year due to rising surface temperatures. There is concern that the loss of Kilimanjaro's ice cap could impact both the local climate as well as the availability of fresh water for local populations who depend upon the glacial melt runoff, particularly during the dry seasons.

Where on Earth...? MISR Mystery Image Quiz #12



Severe Weather Hits U.S. West Coast

http://earthobservatory.nasa.gov/Ne.../NewImages/images.php?img_id=10854

19 message(s), 6 unread Working Online

Start | [Icons] | Inbox - Outlook Express pr... | EO Newsroom: New Ima... | [Icons] | 7:36 AM

Ghostzilla User Manual

[Screenshots](#)[The Works](#)[Get Ghostzilla](#)[User manual](#)
[Very important!](#)
[FAQ](#)[Reviews](#)
[Guestbook](#)[License](#)
[About Ghostzilla](#)Related sites:
[Mozilla.org](#)

Ghostzilla-CD 1.0.1

Welcome, Surfer!

You already know what Ghostzilla is. Now you will learn how to use it. *You may want to jump right on the program, but you absolutely have to read the basic instructions or you won't get anywhere.*

The first part of the document is the very short [Getting Started](#) section. The second part, [Ghostzilla Manual](#), gives you more details on everyday use. Read it right after you get the idea from *Getting Started* how to ride the Web with Ghostzilla. It isn't long either and you will have a good time exploring the options.

Legal note: you must agree to the terms of Ghostzilla [license agreement](#) to use Ghostzilla.

Getting Started With Ghostzilla-CD

Don't run the program yet! Read all the instructions first, than come back and start Ghostzilla.

1. **Find it:** The program is called *Start-Ghostzilla-CD.exe* and you'll find it in the same folder where this manual is. Run it from Windows Explorer, or click [here](#) to run it from your browser.
2. **Say No:** A dialog will appear. Click on "No". (If you have run Ghostzilla-CD successfully before, you can click "Yes.") We'll explain this important dialog in the next section.
3. **Wait:** Wait until the program loads. It may seem that nothing is happening, but you will know by the flashing of your CD drive's lamp that Ghostzilla is on its way. It may take anywhere from ten seconds on a fast CD to a full minute on a very old one for the program to load. Please don't touch the mouse and keyboard until Ghostzilla shows up, if this is the first time you're running it.
4. **See:** Ghostzilla will appear inside Explorer. You will see a grayish "Welcome to Ghostzilla" page with a thin menu bar above it.

If it doesn't show up after a minute or so, and the CD drive lamp is not blinking anymore (you may also see another task on the taskbar, saying "Ghostzilla" or "Ghost..."), go to step 6.

5. **Hide:** Move the mouse slowly towards the Ghostzilla window. Try to move the scrollbar on the "Welcome" page down, but don't let the cursor leave the window area. Then, when you're ready, move the mouse away from Ghostzilla window and watch it disappear! This is how you make the browser vanish when you want -- just move the mouse away from the window.
6. **Show:** To bring Ghostzilla back from hiding, do the following: **touch the LEFT edge of the entire screen with your mouse cursor; then move it all the way across to touch the RIGHT edge; then again move it all the way across to touch the LEFT edge of the screen.** This is the signal for the browser, which has been hidden but listening, to come back.
7. **Play:** Play with Ghostzilla for a while; read the Welcome page, or click on the address bar and type some Web address. If at any moment Ghostzilla disappears because you moved the mouse too far, bring it back with the mouse movement described in step 6.
8. **Close:** Now select the "Exit" menu option and close Ghostzilla.
9. **Say Yes:** A dialog similar to the one you've seen at startup will appear. Click "Yes" and it will close.

That's it -- now start Ghostzilla and follow these steps. When you're done, you will have learned the most important lesson: how to start, hide, show, and quit Ghostzilla. Then read the next section, the Ghostzilla Manual, to learn the mastery of clandestine surfing.

Ghostzilla Manual

Table of Contents

What is Ghostzilla-CD?	Menu Options	Keyboard shortcuts
Starting	Multiple Pages	Keeping Your Profile
Hiding	Appearance	Caution
Showing	Shrinking, Enlarging	License and Source
Quitting	Searching with Google	What else is on the CD?

What is Ghostzilla-CD?

Ghostzilla-CD is the CD-only, no-installation version, of the clandestine, invisible, camouflage (there are a few descriptions) Web browser Ghostzilla.

Ghostzilla browser is your tool against those around you who look at your screen to see if you're surfing the Web. With Ghostzilla, all they see is your normal work screen; only you see the Web page inside it, rendered to look just like your work from more than a couple of feet. But if they come as close to the screen as you are, your simple moving the mouse away will make already barely visible Ghostzilla vanish without trace. When the coast clears, your another simple mouse move will bring Ghostzilla back.

Ghostzilla-CD has one additional, but indispensable feature: **it runs directly from CD, without any installation**. During your browsing session, it creates some temporary files in Windows TEMP directory, but removes them all on exit. This way it leaves no trace of activity. On exit, only your personal settings (preferences, bookmarks, passwords, history), the so-called *user profile*, are stored in a small, portable, encrypted archive, at the folder of your choice (Ghostzilla-CD never writes into Windows registry).

You can even chose to archive the profile on a *floppy* than you can carry along with Ghostzilla-CD. Armed with Ghostzilla-CD and the floppy with your profile archive, you can surf surreptitiously on multiple computers, without leaving trace on any one of them, always keeping your settings with you.

Ghostzilla is derived from today's most powerful browser, Mozilla, version 1.0.1.

Starting

When you first run Ghostzilla from the CD, it offers to restore your profile (more about it [later](#)), and loads in memory. When it loads, it blends itself with your work screen. You only see its thin menu bar, address bar, and this welcome page.

Click on the address bar (or press *F6*), type the address of the Web site you want to visit, and press Enter. Your page should come up in a second; Ghostzilla guesses your network proxy settings so you don't need to do any setup. In rare cases where the guess doesn't work, set the proxies by choosing *Setup->Network Proxies* menu option.

The page will be gray on white, and you won't see any big pictures. It has to be so to avoid attention. But if you move your mouse over a picture's frame, the picture will show; by default, in black and white. Soon you will see how you can [control](#) this appearance.

It might help you to know how Ghostzilla works: it finds a topmost window of your current application, and shows itself on top of that window. This is why it appears Ghostzilla becomes a part of your work application, but it really doesn't change anything in it. Ghostzilla first looks for a convenient window in the center of the screen, and if it doesn't find one, it looks around.

Hiding

You know already that the browser disappears if you move your mouse away. This is what you do if someone is approaching your screen: just move the mouse pointer away (up is most convenient), and let the original application shine through. This move will send Ghostzilla into hiding, inactive but listening, and waiting for you to summon it back.

Showing

When you are ready to surf again, do the LEFT-RIGHT-LEFT movement: move the mouse all the way to the left of the entire screen, then all the way to the right, and again all the way to the left. Ghostzilla will show up again perfectly blended with your work screen, even if you changed it meanwhile. But the page it will show will be exactly at the point where you were when you hid it.

Think of this move as rubbing a magic lamp to get the ghost out -- you have to rub the lamp just right, all the way to the edges and reasonably quickly, for release to happen.

Quitting

When you are ready to call it a day, choose the *Exit* option, or press *Ctrl-Q*. That will completely unload Ghostzilla from memory. On exit, Ghostzilla will offer to store your personal settings in an archive (again, details [later](#)), and then it will remove all the files it has created during your browsing session (in Windows TEMP directory). There will be no Ghostzilla files left on your PC, except for the archive. The archive can be anywhere you chose, even on the floppy, it is small and can be encrypted, as we will see.

Menu Options

Ghostzilla has a few more menu options than you typically see, because it doesn't have a toolbar. Here are the options you can use:

<u>O</u> pen	Opens a new page (you can use address bar instead)
<u>N</u> ew	Creates a new tab; enter address in the address bar
<u>B</u> ack	Goes back one page
<u>F</u> wd	Goes forward one page
<u>R</u> eload	Reloads the page
<u>H</u> ome	Jumps to Ghostzilla online community home page
<u>B</u> ookmarks	Opens the bookmarks menu
<u>S</u> etup	Lets you change hiding level and network proxies.
<u>E</u> xit	Closes Ghostzilla

<u>F</u> ile	Standard file operations (load, save, print)
<u>E</u> dit	Copy/Paste, search in page, standard preferences
<u>V</u> iew	Page source, info
<u>G</u> o	Extended navigation
<u>T</u> ools	Miscellaneous tools
<u>H</u> elp	Standard Mozilla help, Ghostzilla manual, license

To access a menu option from the keyboard, press Alt and the underlined option letter. For example, *Alt-C* will take you one page back.

Multiple Pages

Unlike Internet Explorer, Ghostzilla has only one window for the Web. But that window is capable of showing multiple pages from different sites. This is called *tabbed browsing*. To see how it works, just click on *New* menu option and another *tab* will appear. Enter the new address and the page will load. To go back to the first page, just click on its tab. To close a tab, click on the little "x" icon to the right of all tabs.

The other way to open multiple pages is to right click on a link, and select *Open in New Tab* option. Sometimes you may want the option below that one, *Open Link in Background Tab*. This is perfect for search engines: you see three or four links to pages you might like, so you open them all in background tabs, and let the browser fetch them while you continue reading your main search page.

In Ghostzilla, pop-up windows are disabled. Ads and unwanted pages won't be able to surprise and annoy you.

Appearance

You can control how "ghostly" Web pages will be, by selecting *Setup->Hiding Level* menu option. Ghostzilla supports the following levels, for your hiding pleasure:

Level 1	the Web page looks like in any browser, with full colors and even big pictures always shown, but the page disappears when you move the mouse away
Level 2	the page is black and white, but big pictures are shown in color (when you move the mouse over them, as with all levels below)
Level 3	the page is black and white, big pictures are also black and white
Level 4	the page is gray, big pictures are colored

Level 5	(default) the page is gray, big pictures are black and white
Level 6	the page is gray, big pictures are also gray and pale

When you change the hiding level, you may not notice the change immediately, because some pictures are cached.

Shrinking and Enlarging

The easiest way to control the size of the Ghostzilla window is to resize the windows of your work application to your liking before activating Ghostzilla. Another way is to press the *CTRL* key and the *UP* or *DOWN* arrow within Ghostzilla -- *CTRL+UP* will shrink Ghostzilla window, *CTRL+DOWN* will enlarge it.

At any time, you can press the keys *CTRL* and "[" (left angle bracket) together to shrink the letters of the Web page you are looking at. Keys *CTRL* and "]" (right angle bracket) will enlarge the text, and *CTRL* and "=" together will set the letters back to the original size.

You can shrink the window and the text so much that even someone sitting next to you will likely be unable to see that you're surfing the Web.

Searching Web with Google

Ghostzilla has built-in search with Google engine. Just type your search query (for example, type *stealth surfing*) in the address bar as if you would on Google directly, and press the *Up* arrow key and then Enter. Google search on your phrase will be automatically performed.

Keyboard shortcuts

Other than the Alt-underlined letter shortcuts you see from the menu, use these shortcuts as well to speed your navigation:

F6	Go to address bar	Esc	Stop loading page
Ctrl-F	Find in page	Ctrl-G	Next find
Ctrl-W	Close tab (or browser if no tabs)	Ctrl-Q	Quit Ghostzilla
Ctrl-D	Bookmark page	Ctrl-B	Manage bookmarks
Ctrl-[Shrink text	Ctrl-]	Enlarge text

Ctrl- =	Normal text size	Ctrl- O	Open local file
Ctrl- Up	Shrink page	Ctrl- Dn	Enlarge page
Ctrl- I	View page info	Ctrl- U	View page source
Ctrl- H	View history	Alt- Hom	View this help page

Keeping Your Profile

A browser like Internet Explorer creates, uses, and expects to find, numerous files on your PC: your personal settings, browser cache, etc. Ghostzilla doesn't expect to find anything on your system when you start it, and doesn't leave anything on your PC when you exit it. All the files it needs, it stores in Windows *temporary* directory, and removes them all on exit.

However, you will want to have your personal settings remembered: your bookmarks, history, passwords, certificates, preferences; but you don't want to leave them on the PC you use. On exit, Ghostzilla-CD lets you store those settings in a small **profile archive**, that it puts in "My Documents" folder (by default; you can pick the name and location). That way, no one can know, by looking at files on your PC, that you have used (and will use) Ghostzilla.

You can further protect the archive with a password. And, best protection of all, you can choose to store the archive on a **floppy!** This way, you can bring your settings with you, and move from PC to PC with Ghostzilla-CD and your floppy, never leaving files around and always having your personal settings with you.

Let's start with what happens when you exit Ghostzilla-CD, after your first session. You will see a dialog like this:

Ghostzilla-CD Exiting

Archive Ghostzilla User Profile?

Do you want to store important files from your user profile in an archive before they are deleted? (Those are your bookmarks, history, passwords, cookies, certificates; we recommend you to click "Yes." You can protect the archive with a password.)

Use password for archive:

Ghostzilla-CD kept all your profile files in Windows TEMP directory. It will delete them all on exit, leaving no files on your PC. You can preserve your profile now and restore it the next time you run Ghostzilla-CD. This way all your personal settings will be remembered.

Profile archive location:

Hint: you can use any filename for your profile archive (even A:myprofile for example)

Remember profile archive location for the next start (if different from default)

Delete all profile files from Windows TEMP directory (recommended)

Read the text carefully. If you press "Yes", your current profile will be archived in *c:\My Documents\profile.ar*, unless you choose otherwise. You can enter a password if you want to encrypt your archive.

By default, the "delete all profile files" filed is checked, and we recommend you leave it that way. If checked, whether you chose to archive your profile or not, the temporary files, a proof that you have used Ghostzilla, will be removed.

If you choose to use a non-standard folder and name for your profile, you can choose to remember that location; that location will be stored in your Windows registry under an obscure name and encrypted -- unlikely to ever be seen by anyone else -- but it's safest if you don't use this option.

So now, after you exited Ghostzilla-CD, your profile is stored in an archive. The next time you start Ghostzilla-CD, you will be offered to restore the profile you archived the last time. You will see a dialog like this:

Ghostzilla-CD Starting

Restore Ghostzilla User Profile?

Click "No" if this is the first time running Ghostzilla CD. Click "Yes" if you have your user profile archived from a previous session with Ghostzilla, and you want to restore it.

Use password for archive:

On startup, Ghostzilla-CD creates an empty user profile in Windows TEMP directory, restores your archived profile if you so want, updates the profile as you surf, and deletes it on exit, offering you to archive it before it is deleted. This way it leaves no files on your PC.

Profile archive location:

NOTE: Please be patient while Ghostzilla-CD loads! If you have a slow CD, it may take some time for the load to complete. It is best to not move any windows until Ghostzilla shows up. If Ghostzilla is not visible after it loads, just move the mouse all the way to the left edge of the screen, then all the way to the right, and then all the way to the left again. This is the activation sequence.

If you select "No" (or press Escape key), Ghostzilla will start with a default profile. If you select "Yes", it will restore your previous profile. If you protected

your profile archive with a password, you must enter that password now.

Caution

When you surf with Ghostzilla, keep in mind that your school or company server automatically logs every Web access you or anyone else makes. Some companies routinely search these logs for names of pornographic or offensive sites. If you access those sites, this information will be recorded in the logs, whether you use Ghostzilla or anything else.

Therefore, do not visit such sites. You may also want to use plain Mozilla browser (from time to time at least) for your regular, overt surfing, since Mozilla and Ghostzilla have the same "browser signature." You can find a copy of Mozilla on this CD.

To learn more about Mozilla, visit Mozilla.org.

Most surfing options that apply to Mozilla, work in Ghostzilla, too. Those options that work against the goals of secrecy and invisibility, are disabled. Check the *Help* menu option to learn about Mozilla features.

License and Source

Ghostzilla is based on an open-source browser-development platform, Mozilla. The terms of Netscape Public License and Mozilla Public License require that distributions of the original Mozilla, modifications of Mozilla, and "Larger Works" i.e. combinations of original Mozilla code and proprietary code, make the modified code available as well. For Ghostzilla license agreement and availability of portions of Ghostzilla that originate from the Mozilla source code, please click [here](#).

What else is on the CD?

Other than Ghostzilla-CD itself, you will find the following on the CD:

- Open-source portion of Ghostzilla-CD, in the *program\bin\source* folder
- Mozilla 1.0.1 installer, in the *program\bin\mozilla* folder
- Mozilla 1.0.1 source, in the *program\bin\mozilla* folder

For customer support, please email support@ghostzilla.com.

**Order Ghostzilla-CD from Mixonic for \$9.95 +
shipping**

Ships in two business days.



For questions or comments, please [enter your message here](#).

Ghostzilla

the invisible browser

[Ghostzilla.com home](#) > FAQ

[Screenshots](#)

[The Works](#)

[Get Ghostzilla](#)

[User manual](#)

[Very important!](#)

[FAQ](#)

[Reviews](#)

[Guestbook](#)

[License](#)

[About Ghostzilla](#)

Related sites:

[Mozilla.org](#)

Ghostzilla FAQ

This page will provide answers to some common questions and problems. Send us a question (frequent or otherwise) by entering your message [here](#).

[Screenshots](#)[The Works](#)[Get Ghostzilla](#)[User manual](#)[Very important!](#)[FAQ](#)[Reviews](#)[Guestbook](#)[License](#)[About Ghostzilla](#)

Related sites:

[Mozilla.org](#)

What others say about Ghostzilla

Here are a few excerpts and links to Ghostzilla from other sites, who may be presenting Ghostzilla in a more interesting way than this site does:

- TechTV ("Call for Help"):

You're in your cubicle minding your own business. You just finished the fourth-quarter report that you've been working on for 16 hours straight. Now you start thinking, "Hey, I wonder who won the Sixers game last night?" So you hop on the Net, click on over to ESPN, and BAM! You sense an evil presence over your shoulder. ... [read article](#)

- TechTV ("Screensavers"):

...You probably don't have these luxuries. For many of you, even going to a site as innocuous as CNN.com at work might get you a reprimand. You should be working, after all, not learning. That's where Ghostzilla comes in. ... [read article](#)

- USA Today ("Web guide"):

Tired of worrying about who's snooping over your shoulder every time you log on to the Web?... [read article](#) (under "Web Camouflage")

- Rediff guide to the Net ("Feature"): -- our favorite

Remember the 'boss key'... that revolutionary concept introduced by gaming software in the '80s for office-goers? It was a combination of keystrokes

that would instantly turn off the game and swap the display with a more serious-looking (read boring) screen. Proof that necessity is the mother of invention. Adult games like Leisure Suit Larry came with their own boss keys, allowing overworked employees a much-needed break. ... [read article](#)

- Slashdot

Browse All You Want At Work -- choka writes "I came across a new Mozilla derivative known as Ghostzilla. It has the ability to open and hide the browser within most applications with simple mouse gestures... [read article](#)

- WebAttack

Ghostzilla is a unique web browser for all those internet addicts that surf the web at times they really should be doing something else. It uses a clever approach that completely integrates the browser interface into virtually any application interface as well as Windows Explorer. ... [read article](#)

Users' comments

This is a selection of comments from the Ghostzilla [guestbook](#):

- JD, USA:

It is about time someone did this for us workerbees. Its not our fault that workload is nil or we get done too quickly. You guys rock!! Keep it up.

- Sir Bob Of Denver, Austin, TX USA:

Huzzah! Finally a program that will let me slack without getting caught. Take that, Mrs. Boss Lady!
Best Program Ever.

- anonymous, West Coast USA:
This is really great!! I used to hide online book text in a skinny minimized Excel window, but this is a thousand times easier and better. Thank you!!!!
- Rikki, Glasgow:
Hi, Well this is just fantastic!
I have a pretty boring day job and look after a lot of forums and other sites which I like to keep tabs on. So now I can without fear of having my boss come in and give me crap.
- Pete, IL, USA:
Great Great product, There is much downtime during product testing (waiting for timeouts and such). Now i can keep current with my e-mail, and news.
- Richard, USA:
This is the single smartest idea I have seen since I can't remember when. The implementation is SOLID. It just works... really well. I LOVE THIS PROGRAM.
- C Buck, Detroit:
The program is what I have been looking for, for a long time. No more anxiety about the boss sneaking up on me from behind!
- Rex, Clarksville TN:
Way Cool. Beyond the whole appeal of sneakiness, I actually like the interface. Very clean and direct. Unlike Explorer and definitely unlike AOL/CS. Two thumbs up.
- Dan, Brisbane:
Love this, not just cos I can hide it but because I can simply flick the mouse while I'm working to get the latest news. The grey look is great on the eyes too.
- Hegem0n, PHX:
I wonder why this program isn't bigger and more widespread. It has solved the

great problem of the 21st century.

- Joseph, Montreal:

Impressive... Really nice. Some fellow workers are always too curious in this new work environment I'm in. This is amazing. I love it. I find I'm more productive now! Then ever before. Makes a big difference when your happy.

- Kristie, Cleveland TN:

The Ghostzilla is a great invention for when I am browsing pages that I do not want my kids seeing. (I am a housewife.) Thank you for the best thing that I have found on the net and on Tech Tv. Keep up the good work.

- redhd, ORD:

This is perfect, my monitor can be seen from the door & now cameras are being installed to watch some of us. I'm in IT, employer sucks, not much work coming my way, now I can always look busy doing my network stuff! But can now spend my time looking for a better job or just surfing & no more prying eyes to catch me :)

- Pete, FL., USA:

Way too cool! It's been nice looking at some of my kids xmas presents, online & be able to get out of the window before they have a chance to see it.
SLICK!!!!

- Tony O, UK:

Good program, really cool, having fun.

- Carlos, S.A. TX:

Can't get over how easy it is to use without others knowing, i'll smile alot more at work ;)

**Order Ghostzilla-CD from
Mixonic for \$9.95 + shipping**

Ships in two business days.



For questions or comments, please [enter your message here](#).

©2002,2003 Ghostzilla.com. All rights reserved.

[Screenshots](#)

[The Works](#)

[Get Ghostzilla](#)

[User manual](#)

[Very important!](#)

[FAQ](#)

[Reviews](#)

[Guestbook](#)

[License](#)

[About Ghostzilla](#)

Related sites:

[Mozilla.org](#)

About Ghostzilla.com

We are a small (two-person) company dedicated to making life in the office easier. We believe that the way to good and productive work is not through restrictions. On the contrary, restrictions like having to spend ten hours in the office and not being allowed to refresh mentally with a little Web surfing, stifle creativity and make people resentful.

Good managers understand that; most managers don't. The happiest and most productive workplaces are where programs like Ghostzilla are completely unnecessary.

What is your privacy policy?

Ghostzilla.com does not collect user information, but whatever personal information we do get (emails etc.), we will never give to any third party. Ever!

How can you be contacted?

E-mail: questions @ ghostzilla.com -- general questions
support @ ghostzilla.com -- support for Ghostzilla-CD

Address: Ghostzilla.com Company
Toronto, Ontario M5V 3S6,
Canada